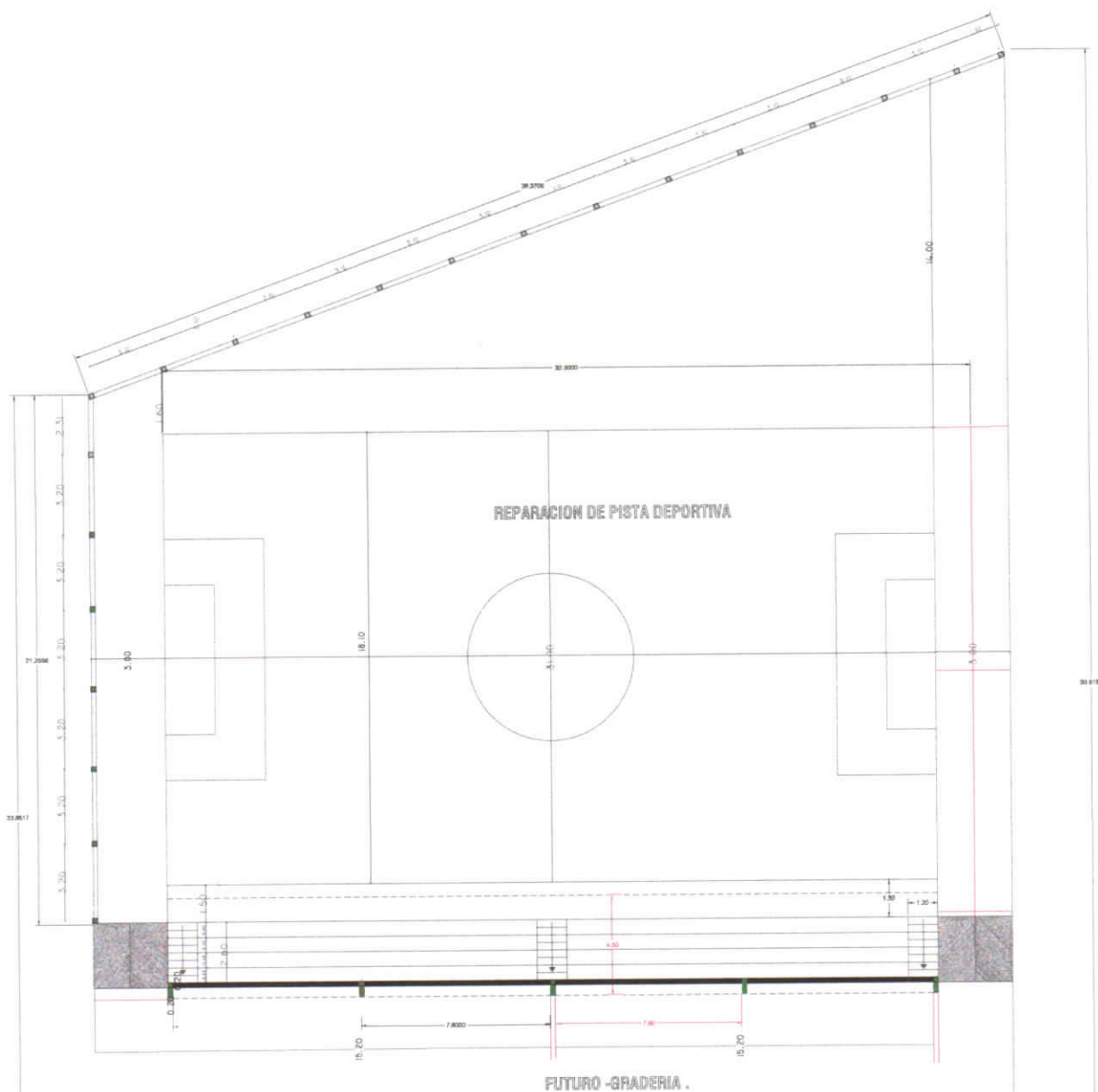


MUNICIPALIDAD DE SAN MIGUEL  
REPARACION CENTRO COMUNITARIO SANTA LIBRADA

Blanca Molinas  
Arquitecta



# MUNICIPALIDAD DE SAN MIGUEL

## REPARACION CENTRO COMUNITARIO SANTA LIBRADA

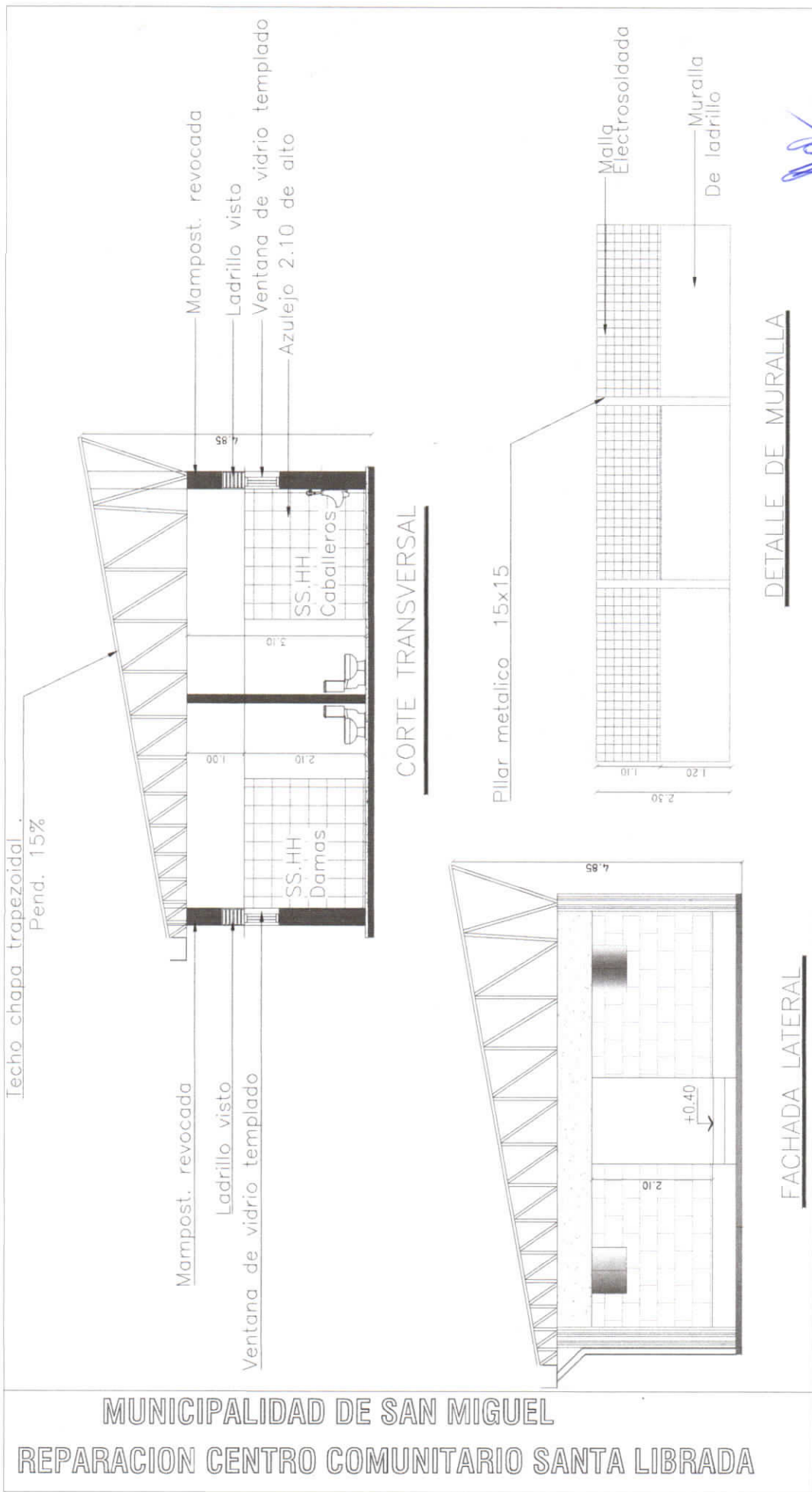
  
Blanca Molinas  
Arquitecta

This architectural floor plan illustrates a restaurant layout with the following dimensions and features:

- Overall Dimensions:** The main dining area is 7.60 units wide and 6.50 units deep. A side section is 3.70 units deep and 2.50 units wide.
- Entrance and Reception:** The entrance is located at the bottom center, leading into a reception area with a curved desk.
- Seating Areas:**
  - Bar/High-top Seating:** Located along the top wall, featuring a curved bar and high-top stools.
  - Booth Seating:** Along the left and right walls, featuring built-in benches and round tables.
  - Central Seating:** A central area with several round tables and chairs, including a 1.50 unit wide table.
- Service Counter:** A long service counter runs along the top wall, separating the bar area from the main dining area.
- Dimensions and Spacing:**
  - Top wall: 0.30 unit wide.
  - Left wall: 0.30 unit wide.
  - Right wall: 0.30 unit wide.
  - Bottom wall: 0.30 unit wide.
  - Central aisle: 3.55 units wide.
  - Bar area: 1.50 units wide.
  - Service counter: 0.50 units wide.
  - Reception area: 3.70 units deep.
  - Side section: 2.50 units wide.

RADA

Blanca Molina  
Arquitecta



*Blanca Molinas*  
Arquitecta

Techo chapa trapezoidal.  
Pend. 15%

Pilar de H.A.

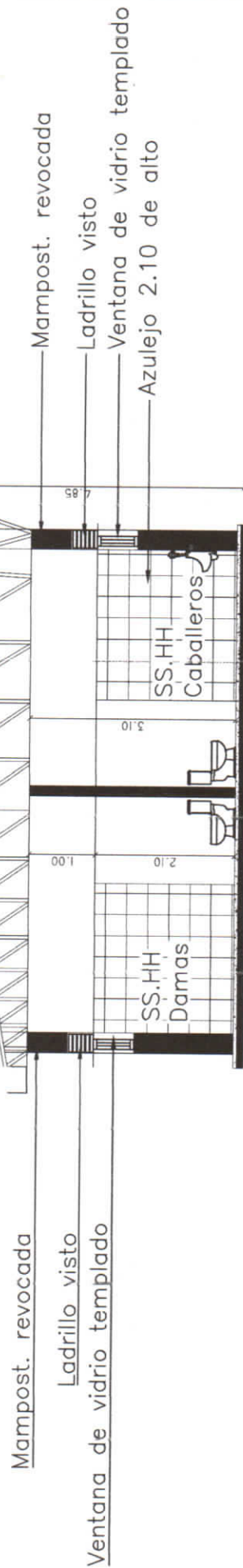
Mampostería de ladrillo laminado

FACHADA FRONTAL

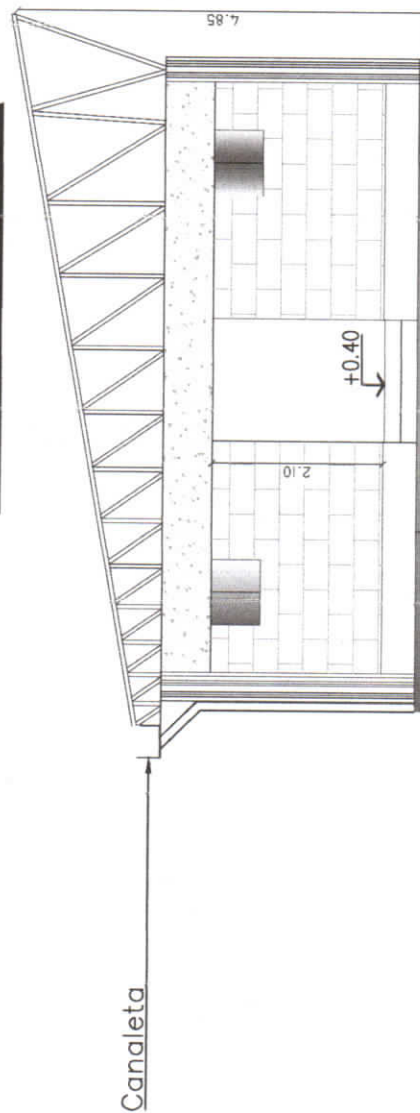
MUNICIPALIDAD DE SAN MIGUEL  
REPARACION CENTRO COMUNITARIO SANTA LIBRADA

  
*Blanca Molinas*  
Arquitecta

Techo chapa trapezoidal.  
Pend. 15%



CORTE TRANSVERSAL



FACHADA LATERAL

MUNICIPALIDAD DE SAN MIGUEL  
REPARACION CENTRO COMUNITARIO SANTA LIBRADA

*Blanca Molinas*  
Arquitecta